

GTW Performance Specs



On the Cover

GE's installed fleet of HA gas turbines has accumulated more than 175,000 fired hours

Editorial Contacts

Engineering
Harry Jaeger

Managing Editor
Bruno deBiasi

Advertising Contacts

Jim Janson (United States)
publications.grp@snet.net

Peter Gilmore (Europe)
pgilmores@aol.com

Akiyoshi Ojima (Japan)
ojima@media-jac.co.jp

Specs Issue Orders

Attn: Brian Davis
orders@gasturbine-world.com

Gas Turbine World

Pequot Publishing Inc.
www.gasturbine-world.com

© 2018 Pequot Publishing Inc.
All rights reserved. Reproduction
or transmission without written
permission strictly prohibited.

Postmaster. Please send Form 3579
to P.O. Box 447. Southport CT 06890

Simple Cycle Gensets

- 4 Performance Parameters**
Guide to design ratings and correction factors for non-standard conditions
- 7 Index to SC Ratings**
Quick reference to performance specs sorted by OEM builders
- 8 Genset Model Ratings**
Based on ISO standard site conditions at base load output on natural gas fuel

Combined Cycle Plants

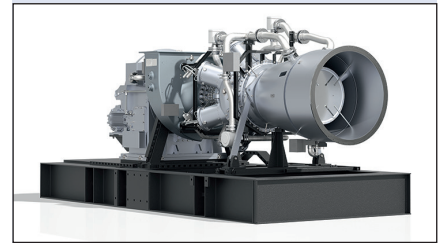
- 18 Performance Parameters**
Guide to plant ratings and correction factors for non-standard conditions
- 21 Index to CC Ratings**
Quick reference to performance specs sorted by OEM builders
- 22 Combined Cycle Ratings**
Based on ISO standard site conditions at base load output on natural gas fuel

Mechanical Drive Units

- 31 Performance Parameters**
Guide to design ratings and correction factors for non-standard conditions
- 33 Index to MD Ratings**
Quick reference to performance specs sorted by OEM builders
- 34 Mechanical Drive Ratings**
Based on ISO standard site conditions at base load output on natural gas fuel

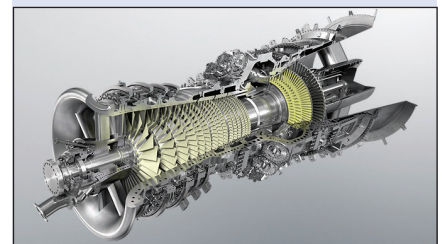
Marine Gas Turbines

- 33 Index to Marine Ratings**
Quick reference to performance specs sorted by OEM builders
- 38 Shaft Output Ratings**
Based on OEM-specified operating conditions on liquid fuel



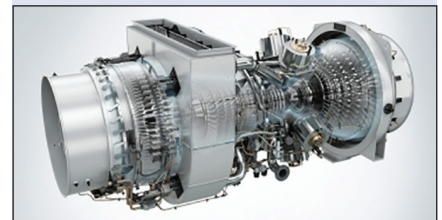
MGT6000

MAN Energy Solutions gas turbine rated at 7800 kW and 33.2% efficiency for simple cycle power generation, *page 13*



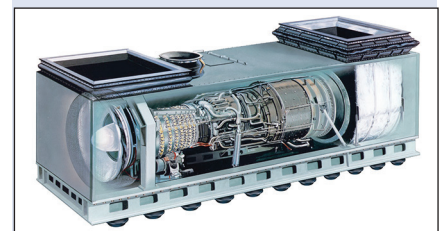
M501 JAC

MHPS advanced air-cooled gas turbine for 1x1 single-shaft combined cycle module rated at 614 MW and 64.0% efficiency, *page 28*



SGT-A65 DLE

Siemens mechanical drive gas turbine with dry low emissions combustion is rated at 77,645 hp and 43.6% efficiency, *page 36*



LM2500+G4

GE marine module used globally by 35 navies to power corvettes, patrol boats, frigates, destroyers, cruisers, cargo ships and aircraft carriers, *page 38*

